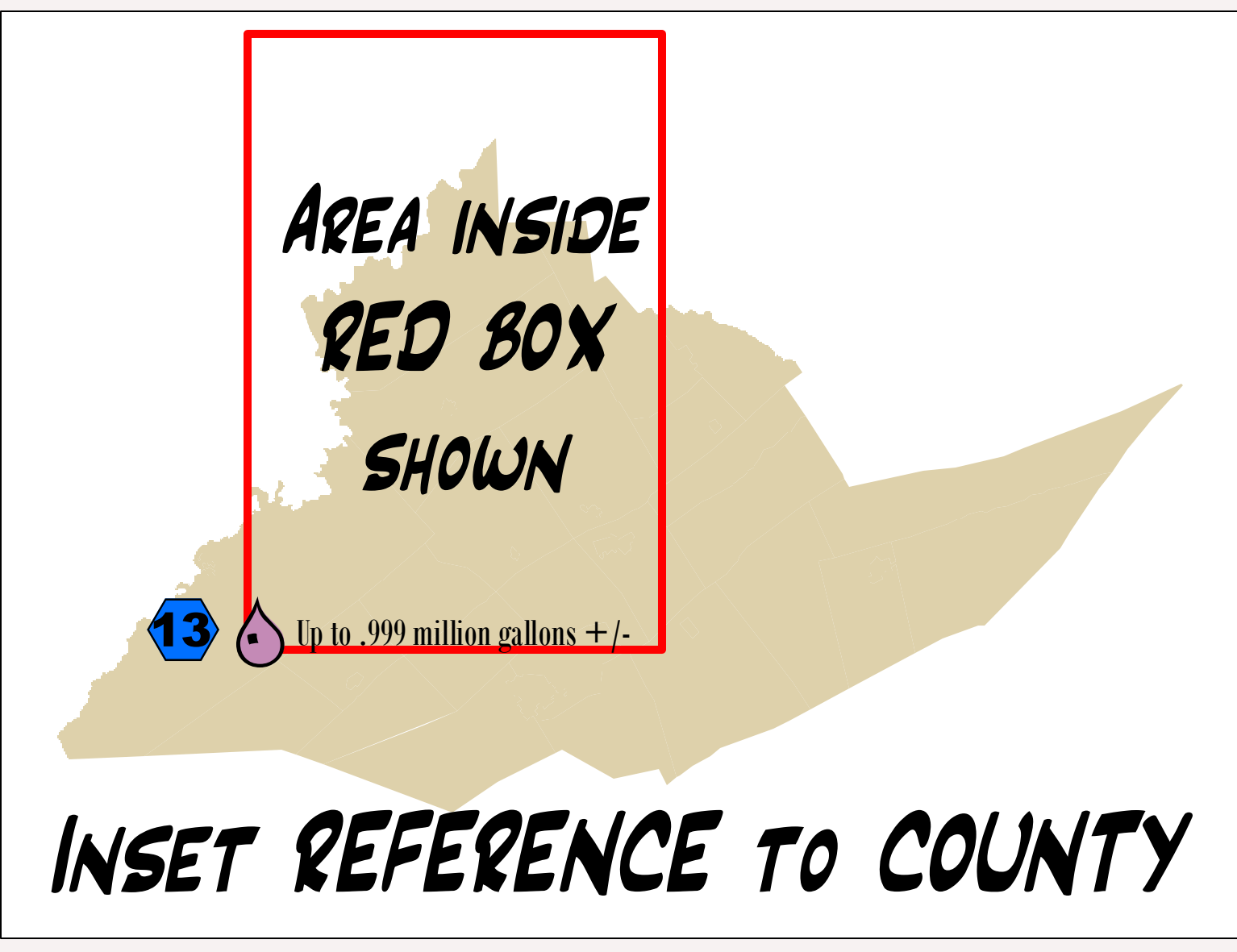


GAS WELL LOCATIONS IN THE MARCELLUS SHALE FORMATION

KEY TO FEATURES

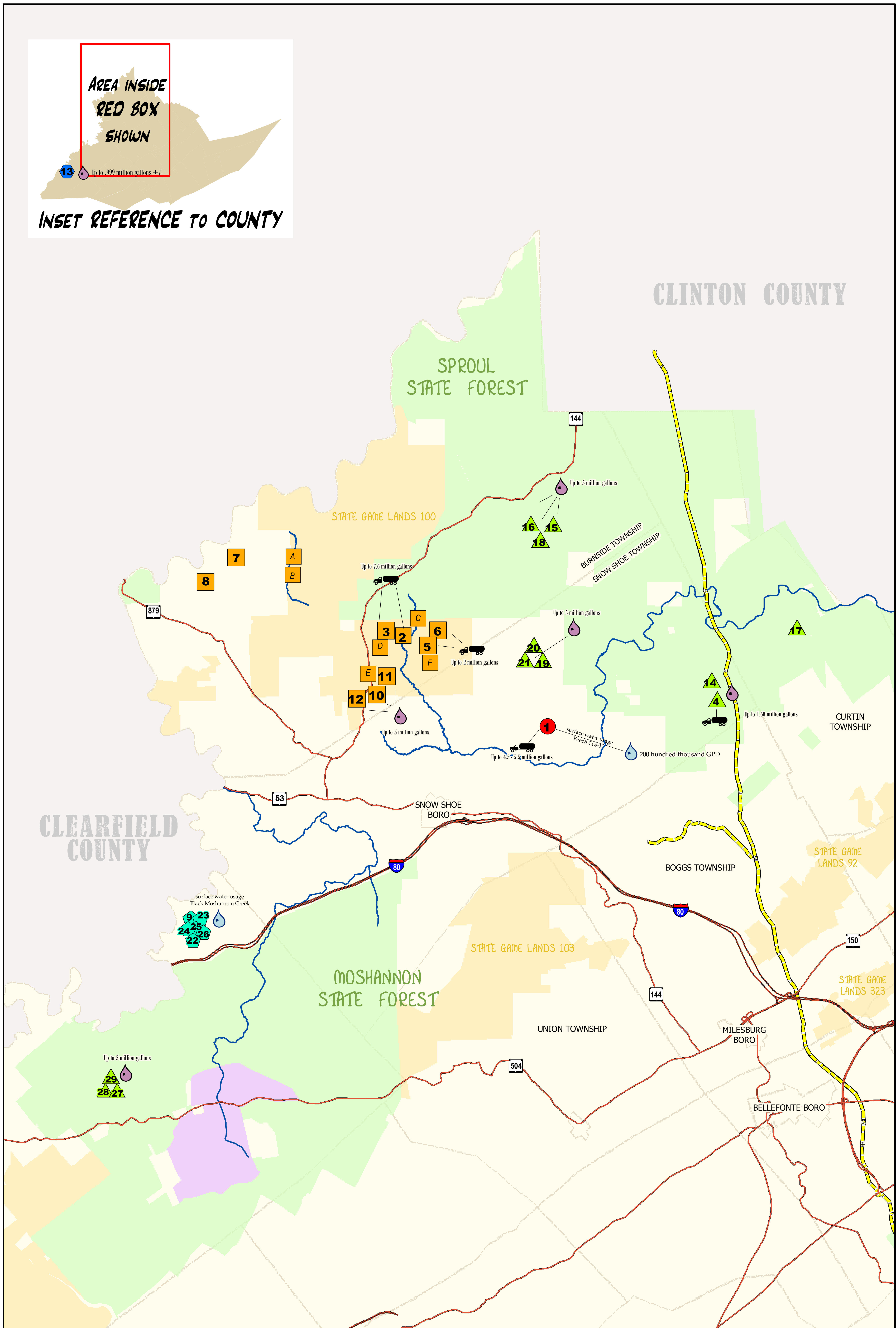


- State Forest Land
- State Game Land
- State Park Land

GAS WELL SITES

- 1 Gulf USA TKI #2H
(Range Resources - Appalachia, LLC)
- 2 Litke 1H.....next to Litke 2H
- 3 Litke 2H
(North Coast Energy, Inc)
- 4 Well No. 1000 C.O.P. Tract 231
.....shares pad with #14
(Anadarko Petroleum Corporation)
- 5 Litke 8H.....next to Litke 7H
- 6 Litke 7H
(EXCO - North Coast Energy, Inc)
- 7 Sterling Run Club #5
- 8 Sterling Run Club #4
(EXCO - North Coast Energy, Inc)
- 9 Resource Recovery Well #1
.....next to #22
(Rex Energy Corporation)
- 10 Litke 14H.....next to Litke 15H & 16H
- 11 Litke 15H.....next to Litke 14H & 16H
- 12 Litke 16H
(EXCO - North Coast Energy, Inc)
- 13 Cowfer #1B
(Carrizo Oil and Gas, Inc)
- 14 Well No. 1001H C.O.P. Tract 231
.....shares pad with #4
(Anadarko Petroleum Corporation)
- 15 Well No. 1001H C.O.P. Tract 259
(Anadarko Petroleum Corporation)
- 16 Well No. 1002H C.O.P. Tract 259
(Anadarko Petroleum Corporation)
- 17 WW Litke #1H
(Anadarko E&P Company, LP)
- 18 Well No. 1000H C.O.P. Tract 259
(Anadarko Petroleum Corporation)
- 19 R Carlin #2H
.....next to R Carlin #3H & #1H
- 20 R Carlin #3H
.....next to R Carlin #2H & #1H
- 21 R Carlin #1H
(Anadarko E&P Company, LP)
- 22 Resource Recovery Well #6H
.....next to Well #1
(Rex Energy Corporation)
- 23 Resource Recovery Well #2H
- 24 Resource Recovery Well #3H
- 25 Resource Recovery Well #4H
- 26 Resource Recovery Well #5H
- 27 Well No. 1000H C.O.P. Tract 244
.....next to 1001H and 1002H
(Anadarko Petroleum Corporation)
- 28 Well No. 1001H C.O.P. Tract 244
- 29 Well No. 1002H C.O.P. Tract 244

- Natural Gas Line - Existing
- A thru F - gas line connections
- assumed all will be North Coast -
- A to B - Sterling Club Run #1 to SGL 100 #118 Pipeline
- C - Litke 1H/2H to Litke 7H/8H
- D - Litke 1H/2H to TCO transmission pipeline
- E - Litke 14H thru 19H to the Litke 1H/2H trunkline
- F - Pad #3 to Litke 7H/8H
- Water to be supplied by truck
- Water to be taken at surface
- Water consumption in 24 hour period



Note: Gas well locations mapped based on information provided by energy companies whose wells are depicted on this map. For cartographic purposes, some well locations are not spatially accurate as to show the number of wells being drilled per pad. All other data shown on this map from Centre County GIS, 2009.